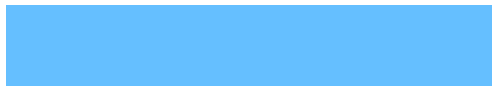
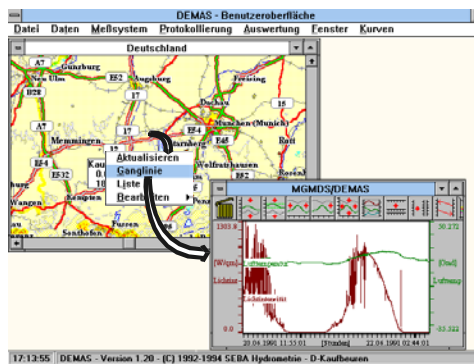




Operation Manual

Version 1.4x



Autor: Str/CS
Erstellt am: 16.11.99



Table of Contents

Table of Contents	1
Preface	4
I. Installation of DEMAS	5
1. System requirements	5
2. Installation of a new version of DEMAS	5
3. Modification of an installed version of DEMAS	6
3.1. Change of language	7
3.2. Installation of an individual configuration	7
3.3. Installation of a demo-configuration	7
3.4. Erase complete configuration	7
II. The user surface of DEMAS	8
1. A short introduction into DEMAS	8
1.1. Start	8
1.2. End	8
1.3. DEMAS basic knowlegde	8
1.4. Working in groups	10
2. Menu description	12
2.1. The menu "File"	12
2.1.1. The command "Close"	12
2.1.2. The commands "Print" and "Printer Setup"	12
2.1.3. The command "Preferences"	13
a) Background Bitmap	13
b) Value window	13
c) Click and move	13
d) Save settings when exiting	14
2.1.4. The command "Password protection"	14
2.1.5. The command "About"	14
2.1.6. The command "Exit"	14
2.2. The menu "Data"	14
2.2.1. The command "Read Datadisk"	14
2.2.2. The command "Reset Data"	15
2.3. The menu "System"	15
2.3.1. The command "Measurement System"	15
2.3.2. The command "Install driver"	15
2.4. The menu "Protocol"	15
2.4.1. The command "Show Logbook"	15
2.4.2. The command "Protocol Options"	16
2.4.3. The command "Stop Protocol"	16
2.4.4. The command "Resume Protocol"	16
2.5. The menu "Evaluation"	17
2.5.1. The command "New Value Window"	18
2.5.2. The command "Show Chart"	18
2.5.3. The command "Show List"	18
2.6. The menu "Window"	19
2.6.1. The command "New Group Window"	19

2.6.2. Commands of the "Menu Window"	19
a) "Arrange"	19
b) "Tile"	19
c) "Arrange Icons"	19
d) List of windows	20
3. Group windows	21
3.1. The menu "Group Window"	21
3.1.1. The menu command "Options"	22
3.1.2. The menu command "Remove Group"	22
3.1.3. New sub-ordinated windows	22
a) "New Value"	22
b) "New Complex Window"	23
c) "New Bitmap"	23
d) "New Group" (jump window)	24
3.2. Application of the sub-ordinated windows	24
3.2.1. The local menus of the sub-ordinated windows	24
a) Open	24
b) "Actualize"	24
c) "Chart"	24
d) "List"	24
e) "Extended Display"	25
f) "Options"	25
g) "Extended Display Options"	25
h) "Move"	25
i) "Change Size"	25
j) Remove	25
3.2.2. The mouse actions of sub-ordinated windows	26
a) Left mouse-button - move	26
b) Right mouse-button - local menu	26
c) Double click with the left mouse-button - open	26
Annex A : Glossary	27

Preface

Welcome to *DEMAS*, version 1.2.

With our new *SEBA*-software package for recording of measuring data under windows, we took care to meet your desires and requirements in practice.

The name *DEMAS* stands for Data Recording Management and Evaluation Software (*Daten Erfassungs Management und Auswerte Software*). So *DEMAS* has been developed as comprehensive software for the management of complex measuring networks for the most different applications, especially for hydrometry and meteorology. *DEMAS* is not fixed to special dataloggers or recording systems, but can be adjusted - as not been implemented already - to the most different measuring systems.

If *DEMAS* is not comprehensive enough for you, it co-operates with any other software-packages, which offer the respective interfaces, as it is usual under windows.

By developing *DEMAS*, we attached great importance to the fact, that we relieve the user of as much work as possible and that he has access with a few actions only to all interesting data of a measuring parameter. So you can display a clear chart for any available sensor within the measuring network, or print out the respective list. Obviously any chart or list can be connected to other parameters for a clear comparison. Therefore *DEMAS* works closely together with the evaluation software *MGMDS* and *MLMDS*.

In the following chapters you will get acquainted with the use of *DEMAS*. In the first part the installation of *DEMAS* to your computer is described comprehensively. The second part introduces into the basic characteristics of the user surface, before all possibilities of *DEMAS* will be presented.

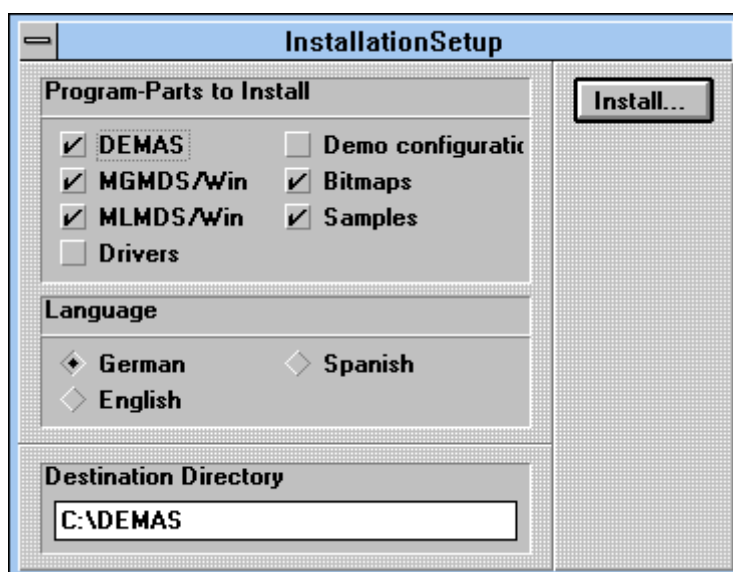
I. Installation of DEMAS

1. System requirements

- *DEMAS* runs with any IBM-compatible computer under windows 3.1 or higher with a 386- (or higher) processor with at least 4 MByte main memory and 20 MByte free storage capacity at the hard disk.
For a comfortable working, we recommend to use a 486- processor and a working storage of 8 MByte.
- A VGA- (or higher) monitor
- A mouse
- A 3,5 " disk drive.

2. Installation of a new version of DEMAS

For installation of a new version of *DEMAS* please insert disk 1 of the installation disks and call the menu command Data/Execute out of the data or program manager. Enter A:/SETUP and confirm it. Then the dialog box **INSTALLATION SETUP** appears.



Select the program parts which you want to install and the language in which you want to use *DEMAS*. Please avoid changing the destination directory.

In case you have an installation disk with a demo-configuration, you can install it now by marking *Demo configuration*. If you have no installation disk with demo-configuration or if you want to install it later on or not at all, please take care that *Demo-configuration* is not marked.

If you have inserted all required inputs, please click to *Install...* and follow up the instructions.

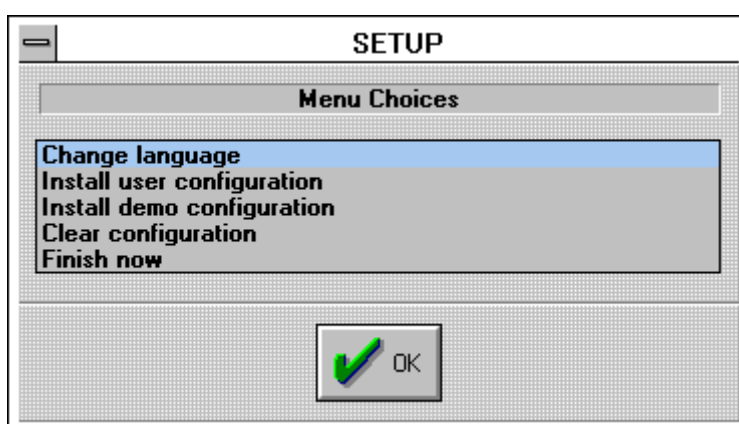
Note: The installation process can be stopped at any time with ESC.

At the end of the installation process the program manager group can be determined, in which the program icons belonging to *DEMAS* shall be inserted. If you don't want to insert icons into the program manager, abort with ESC.

3. Modification of an installed version of DEMAS



For modifying an already installed version of *DEMAS*, choose the program *Setup* out of the program manager-group *DEMAS*. A dialog box appears, indicating several actions.



Choose one of these actions and click to *OK*. The chosen action will be executed. The respective description please learn from the following:

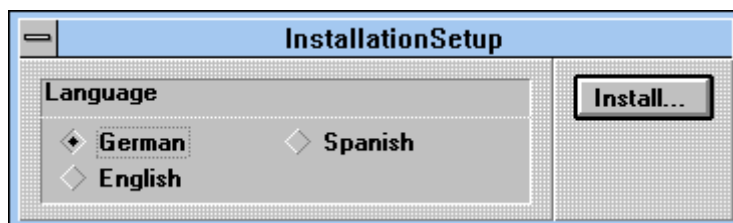
Attention: Don't use the setup-program, during *DEMAS* is being executed.

Attention: Don't use the setup program, if you have not full knowledges about the consequences of the setup program. Changes by means of the setup program can remove all before stored data.

For finishing the setup program, please enter *Finish now* and click to *OK*.

3.1. Change of language

For changing the language, in which *DEMAS* works, please enter the command *Change language*, choose one of the indicated languages and confirm with *Install...*



3.2. Installation of an individual configuration

For receiving an already configured version of *DEMAS*, please choose the command *Install user configuration*, insert the installation disk, covering your individual configuration, and state the disk drive, which keeps your installation disk.

Attention: This command erases all before stored data and all adjustments of the user surface.

Note: Pre-configured versions of *DEMAS* can only be worked out from *SEBA* and will be provided on request only.

3.3. Installation of a demo-configuration

In order to receive a configured version of *DEMAS* as demo, please choose the command *Install demo configuration*, insert the installation disk, which comprises the demo-configuration and state the disk drive, which keeps your installation disk.

Attention: This command erases all before stored data and all adjustments of the user surface.

Note: A demo-configuration can already be executed at the installation of a new version of *DEMAS*.

Note: Pre-configured demo-versions of *DEMAS* will be provided on request only.

3.4. Erase complete configuration

For erasing all stored data in *DEMAS* and all adjustments of the *DEMAS* user surface, choose the command *Clear configuration*.

Attention: Erased data cannot be restored.

II. The user surface of DEMAS

1. A short introduction into DEMAS

Within the following pages, you will get to know, how *DEMAS* is constructed and how it functions. At the same time while reading this chapter, you can try some of the described functions.

1.1. Start



For starting *DEMAS*, click twice to the *DEMAS* icon *DEMAS* in the program manager group *DEMAS*. Then the user surface will be constructed and initialized. Depending on the size of the measuring network, this can take some time. *DEMAS* is ready with initializing, when the logo disappears.

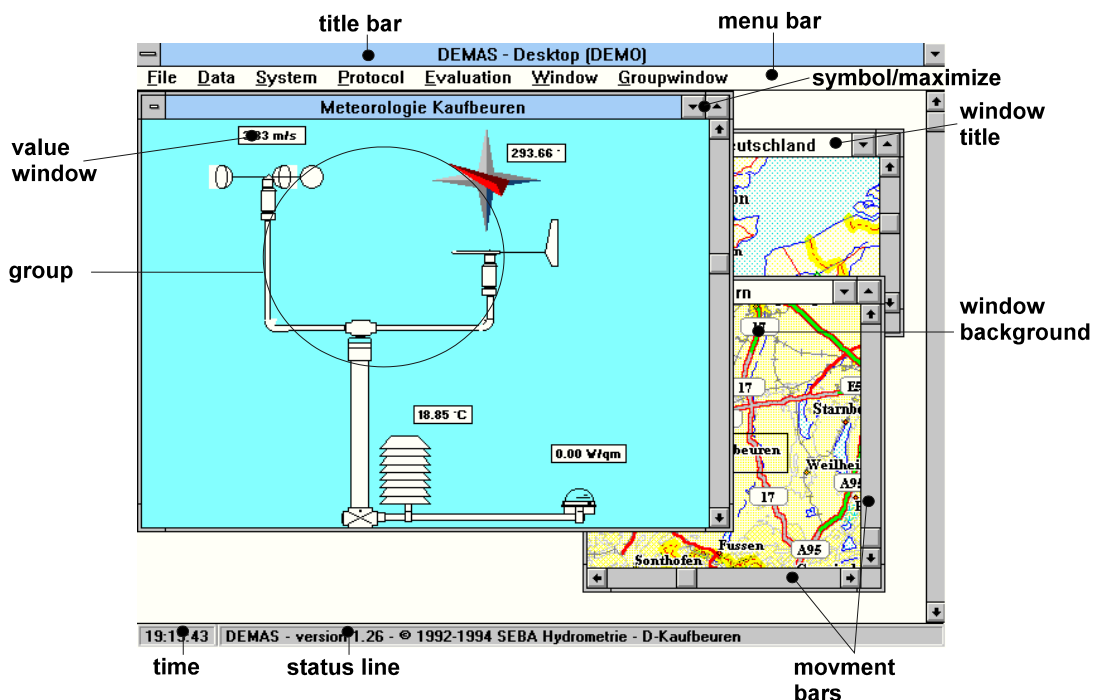
1.2. End

For ending *DEMAS*, click to the menu command File/Exit or press the key-combination ALT + F4.

Note: *DEMAS* has to be finished before leaving Windows, as otherwise, Windows cannot be closed.

1.3. DEMAS basic knowlegde

The *DEMAS* screen presents following elements:




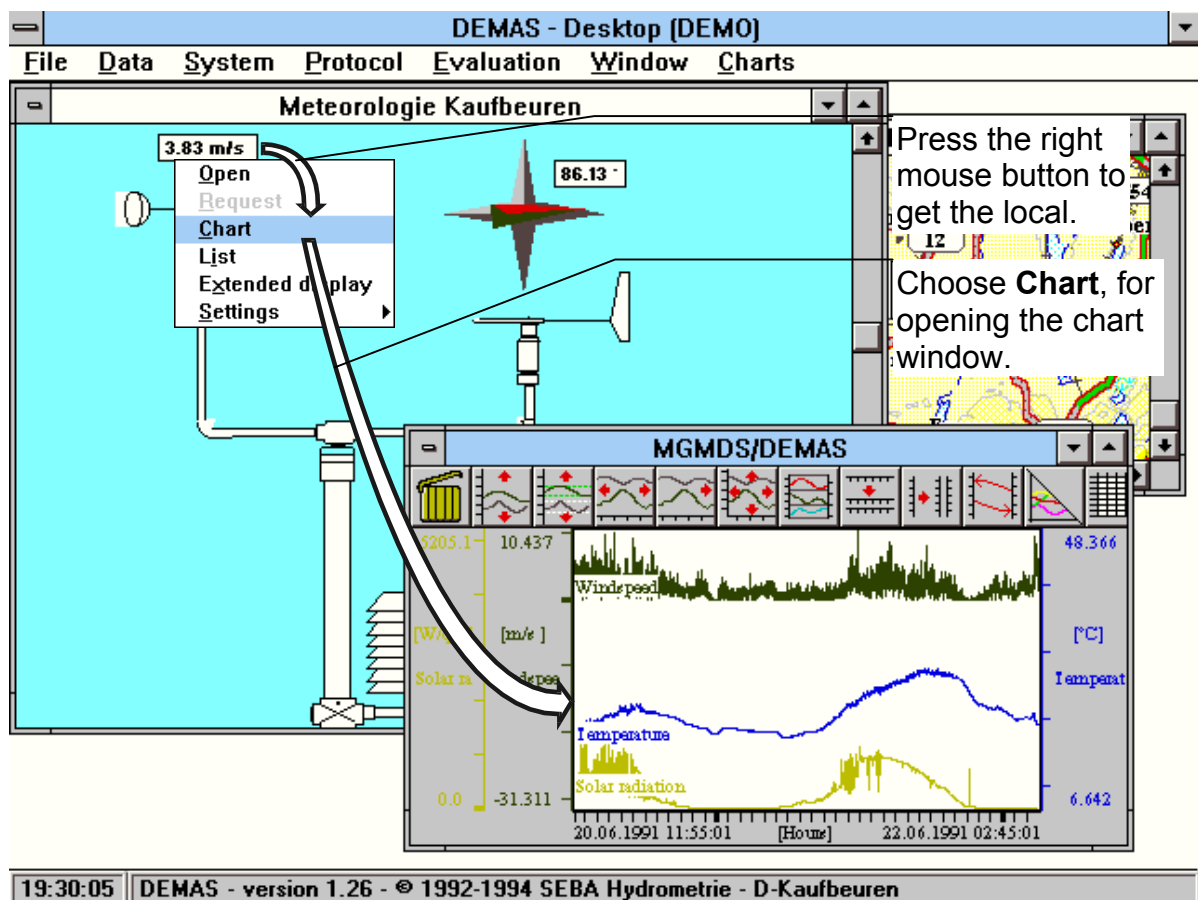
- Group: Groups are important components of *DEMAS*. They are windows, shown at the user surface and serve for the illustration of measuring networks, administrated by *DEMAS*. For each group as much measurement windows or also action windows, which refer to other groups, can be placed.
- Value window: Value windows serve for the presentation of measuring parameters within groups. They can consist of texts or of graphs, which represent the measuring value.
- Window background: The window background can either be a white area or a graph. Often a map serves as window background.
- Picture bar: With the picture bars, you can move the window background as well as all containing windows.
- Menu bar: The menu bar contains the menus. By clicking a menu name, you call a list of commands, with which *DEMAS* can be controlled.
- Window title: The window title contains the name of a group.
- Status line: The status line give information about the action, which *DEMAS* executes actually and if applicable, it displays the last occurred fault. For removing this fault information, please click to the left mouse-button above the status line.
If no actions are executed by *DEMAS* and no fault information are displayed, only the copyright text appears.
- Time: In the time space generally the actual system time will be shown. If *DEMAS* executes a time-consuming action, this space changes into a stop-watch.
- Symbol/Complete picture: These two symbols exist in each Windows-window at the right top. They reduce the window to a symbol or expand it to a complete picture.

1.4. Working in groups

In case you have installed the demo-configuration or an individual user configuration - as described in part I. Installation of DEMAS -, after starting *DEMAS*, one or several groups appear on the screen. As described above, these groups are important components of the user surface, with which you can comfortably have access to the data of the measuring network.

As shown above, on these groups different sub-ordinated windows are placed. With the sub-ordinated windows, different actions can be executed. Generally these actions are called by choosing one menu item out of the local menu. Therefore, move the mouse above a sub-ordinated window, i.e. a value window, press the right mouse-button, keep it and choose one of the listed menu items by releasing the mouse-button above the command. For the exact description of the available menu commands, please refer to chapter 3.2.1. The local menus of the sub-ordinated windows.

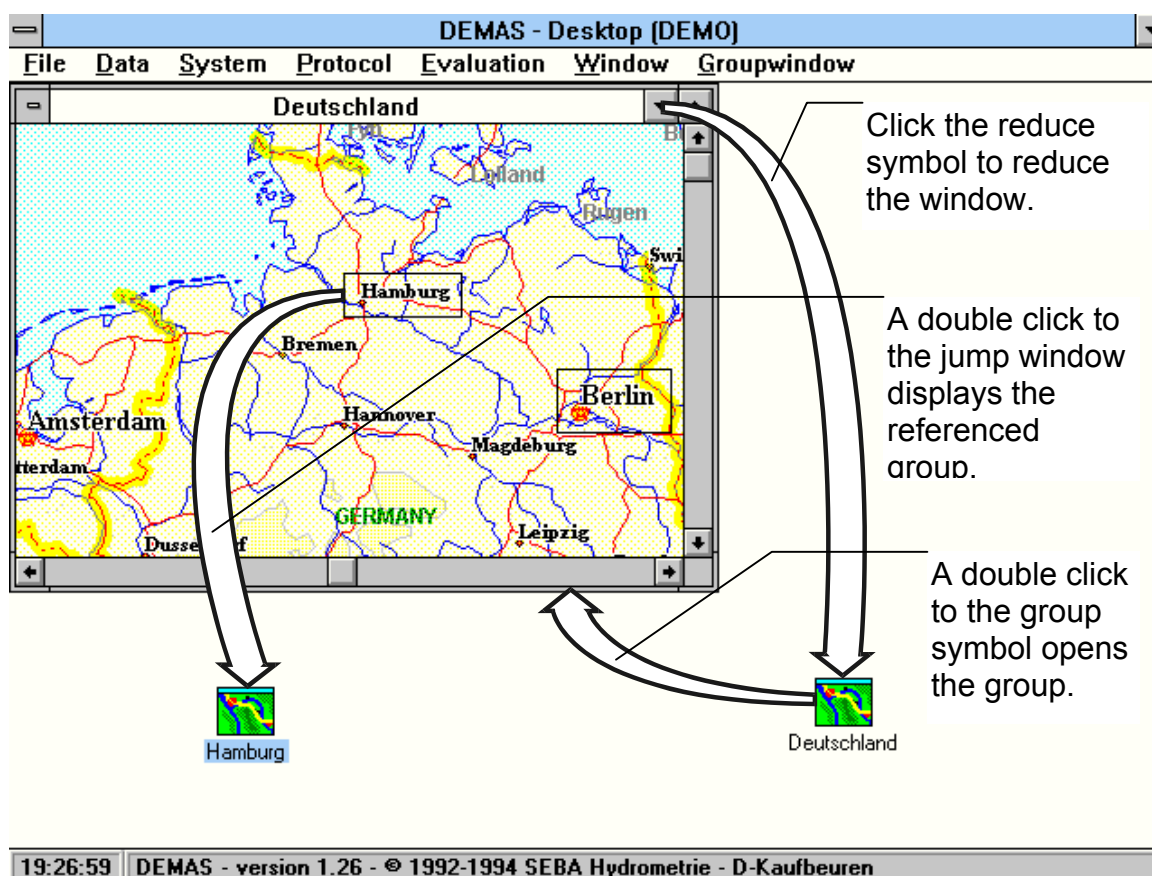
Note: Generally the mouse-pointer changes into a hand  , if a local menu is available.



II. The user surface of DEMAS

In order to jump into another group window, it is sufficient, to move the mouse above a jump-window - a sub-ordinated window, which refers to another group window and generally will be displayed by a rectangular box - and to click twice the left mouse-button. If no jump window is placed within the group, you can switch to other single windows with STRG- + TAB.

By means of the reduction symbol (☐) or with a double click to the closing symbol (☒) a group window can be reduced. So the before displayed group window will be pushed to the front. If all group windows are closed, they can be opened by a double click to symbol of the respective group window (🗺).



2. Menu description

The menu bar of *DEMAS* contains six basic menus:

File Data System Protocol Evaluation Window Groupwindow

2.1. The menu "File"

The menu File contains two menu commands, which are responsible for printing and closing of sub-ordinated windows, resp. for adjusting of *DEMAS*.

File	Data	System	Protocol	E
<u>C</u> lose				Strg+F4
<u>P</u> rint..				
Printer <u>S</u> etup...				
<u>P</u> references...				
<u>P</u> assword protection...				
<u>A</u> bout...				
<u>E</u> xit				Alt+F4

2.1.1. The command "Close"

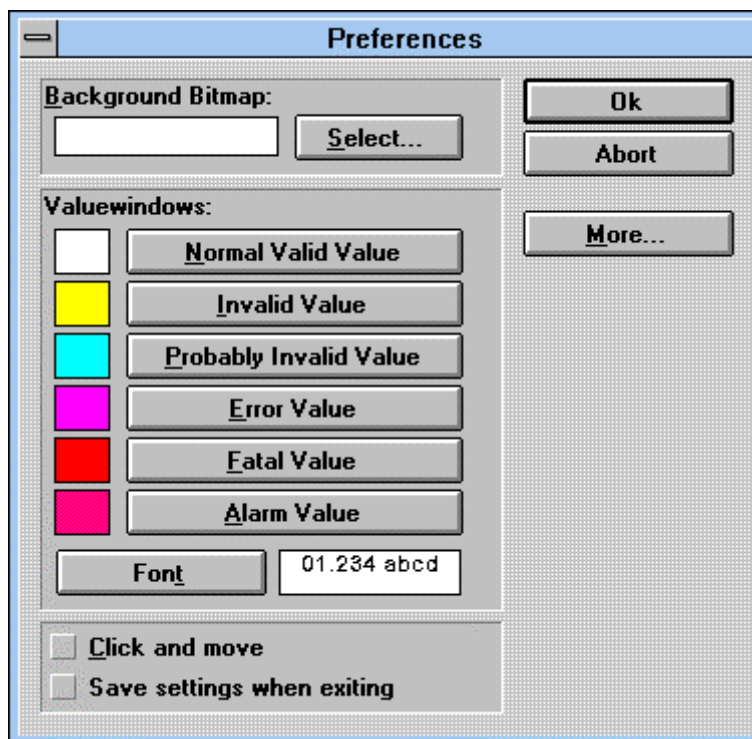
The command Close closes the actual active window. If the window is a group window, this will only be reduced. If the window is for example an *MGMD*S-window, it will be closed.

2.1.2. The commands "Print" and "Printer Setup"

The command Print prints the contents of the active window. Group windows can not be printed. The course of the actions depends on the type of the respective active window. The command Printer Setup presents a dialog box for adjusting of the printer adjustments. The adjustments are valid for the active window only.

2.1.3. The command "Preferences"

By means of the command Preferences, the standard adjustments for the user surface can be chosen:



a) Background Bitmap

In order to show a graphic on the desk top background, insert the data name of the bitmap graphic. The graphic must be either in BMP-format or in DIB-format. Both formats will be supported by windows-paintbrush.

If you don't know the data name of the bitmap, you can choose a graph with the key *Select...*

b) Value window

The dialog windows within the value windows characterize the appearance of the value windows, which are displayed in text format. Therefore the color at determined parameter conditions and the writing mode can be chosen with the respective keys.

c) Click and move

If the key *Click and move* has been chosen, the position of the windows, which are sub-ordinated to the group windows, can be changed by means of the mouse, even without the selection of the local value window menu. Therefore, press the key SHIFT and the left mouse-button above the respective window, keep the mouse-button pressed and move the window to the desired position.

d) Save settings when exiting

If the key *Save settings when exiting* has been chosen, the positions of all windows, which are sub-ordinated to the group windows, will be stored by leaving *DEMAS*. If a new group window or a window sub-ordinated to a group had been drawn up, these positions will be stored in any way.

2.1.4. The command "Password protection"

By means of the command Password protection, the complete user surface can be blocked.

By selection of this menu command, a dialog box for input of the pass word appears. After a second confirmation of the password *DEMAS* can only be used by new input of this password. The password protection is also active after switching off the computer and new start of *DEMAS*.

2.1.5. The command "About"

The command About presents a window with the actual version number of *DEMAS* and the copyright information.

2.1.6. The command "Exit"

The command Exit finishes *DEMAS*. Please refer to chapter [1.2. End.](#)

2.2. The menu "Data"

The menu Data contains all menu commands for administration and in- and export of measuring data:

Data	System	Proc
Read Datadisk...		
Reset Data...		
Read MDSIII...		
Read HT-100...		
Read LG-100...		

2.2.1. The command "Read Datadisk"

The command Read Datadisk reads all measuring data into the system, which are located on the indicated path. The imported data will be automatically assigned to the respective measuring net inputs within *DEMAS*.

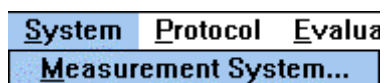
2.2.2. The command "Reset Data"

The command Reset Data opens the measuring network and allows the user to remove selected measuring data.

Attention: Removed measuring data cannot be restored.

2.3. The menu "System"

The menu System contains all menu commands for the administration of the measuring net:



2.3.1. The command "Measurement System"

With help of the command Measurement System, the measurement system can be configured.

Attention: This command must only be executed of trained staff.

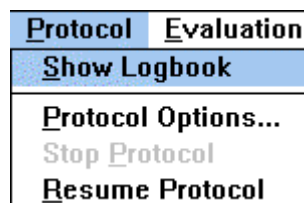
2.3.2. The command "Install driver"

The command Install driver can be used for the administration of the drivers of *DEMAS*.

Attention: This command must only be executed of trained staff.

2.4. The menu "Protocol"

The menu Protocol contains all menu commands, which are necessary for the administration of the *DEMAS* logbook and the protocols :



2.4.1. The command "Show Logbook"

The command Show Logbook opens a window, which contains the *DEMAS*-logbook. This logbook stores all error information and status notes, so that at any time, information for all occurred problems can be recognized in *DEMAS*.

2.4.2. The command "Protocol Options"

The command Protocol Options allows to fix the output instrument for the protocol output.

Attention: This command must only be executed of trained staff.

2.4.3. The command "Stop Protocol"

The command Stop Protocol stopps the actual protocol output and gives the last printed side. The protocol output is de-activated, even in case of a new start of *DEMAS*.

2.4.4. The command "Resume Protocol"

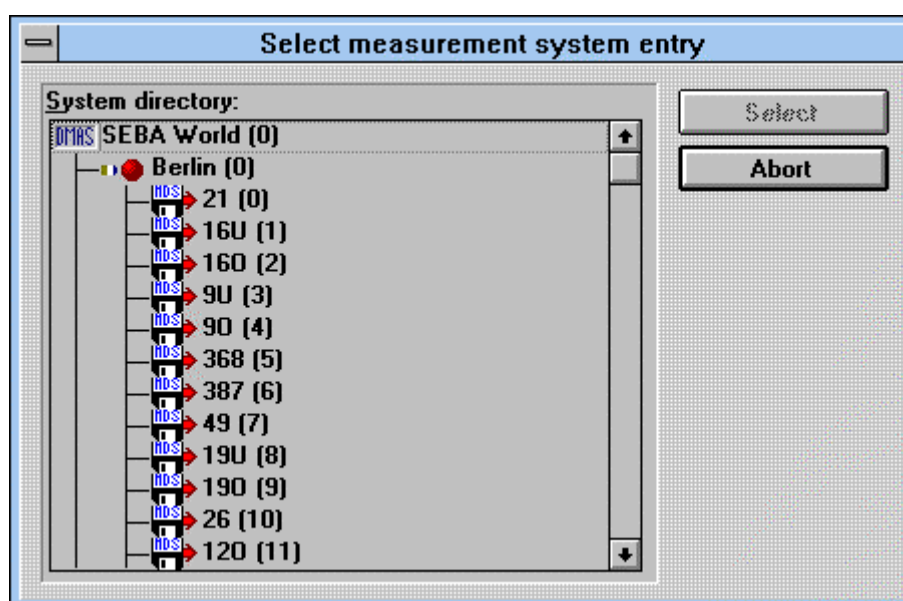
The command Resume Protocol starts the actual protocol output. From this time on, all occuring error information and status notes will be given to the protocol printer. The protocol output is also activated in case of a new start of *DEMAS*.

2.5. The menu "Evaluation"

The menu Evaluation contains menu command for evaluation of data, stored by DEMAS:



By choosing each of these menu commands, a dialog box with the measuring system tree will be shown. Each line of this tree corresponds to an element of the measuring net:

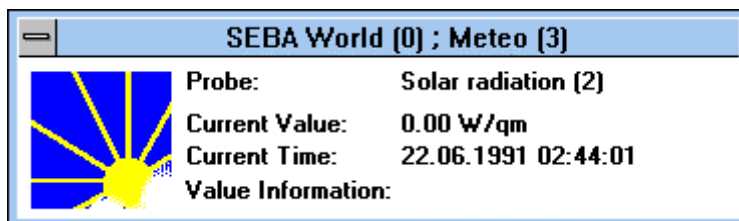


The measuring net consists of a three-step hierarchy:

1. Central computer:
This item represents the complete measuring net.
2. Datalogger (recording system):
This item represents a single datalogger
3. Sensor:
This item represents a single sensor.

2.5.1. The command "New Value Window"

The command New Value Window opens a dialog box, which offers expanded information for single sensors:



A double click with the left mouse-button opens a further part of the window and shows information, which refer to the measuring net configuration.

2.5.2. The command "Show Chart"

The menu command Show Chart presents the measuring line of the chosen sensor/s within a *MGMDS*-window of the *DEMAS* user surface. For selecting one or several sensors, choose the central computer out of the above mentioned measuring system tree, a recording system or a sensor only. By selecting the central computer all sensors will be opened, by selection of a recording system the sensors of the datalogger only and by selection of a single sensor, only this sensor will be opened. If the measuring line is bigger than 1 week, exactly one week will be displayed.

Please observe following:

- if a sensor has no measuring line (recording not activated) a warning signal is given
- if a *MGMDS*-window has already been opened, the chosen chart will be displayed within this window
- if the measuring line is already shown within a *MLMDS*- window or *MGMDS* window, this command is without influence
- for use of *MGMDS*, please read the instruction manual of *MGMDS*

2.5.3. The command "Show List"

The menu command Show List shows the measuring line of the chosen sensor/s in a *MLMDS*-window on the *DEMAS* user surface. For selecting one or several sensors, choose the central computer out of the above mentioned measuring system tree, a recording system or a sensor only. By selecting the central computer all sensors will be opened, by selection of a recording system the sensors of the datalogger only and by selection of a single sensor, only this sensor will be opened. If the measuring line is bigger than 1 week, exactly one week will be displayed.

Please observe following:

- if a sensor has no measuring line (recording not activated) a warning signal is given
- if a *MLMDS*-window has already been opened, the chosen chart will be displayed within this window
- if the measuring line is already shown within a *MLMDS*- window or *MGMS* window, this command is without influence.
- for use of *MLMDS*, please read the instruction manual of *MLMDS*

2.6. The menu "Window"

The menu Window contains all menu commands for the administration of windows, which are sub-ordinated to the user surface:

<u>Window</u>	<u>Groupwindow</u>
New <u>G</u>roupwindow	
<u>A</u>rrange	Shift+F5
<u>T</u>ile	Shift+F4
<u>A</u>rrange Icons	
<u>C</u>lose All	
<u>1</u> Muscat	
<u>2</u> Berlin	
<u>3</u> Meteo	
<u>4</u> Germany	
√ <u>5</u> Oman	
<u>6</u> Salalah	

2.6.1. The command "New Group Window"

The menu command New Group Window opens a new group window. Please read chapter 3.1.1. Group Options.

2.6.2. Commands of the "Menu Window"

a) "Arrange"

Arrange arranges the windows in that manner, that the title bars of the single windows are shown.

b) "Tile"

Tile arranges the windows in that manner, that all of them can be seen.

c) "Arrange Icons"

Arrange Icons arranges all window symbols in one line.

d) List of windows

The names of all your windows are listed within the menu windows. For opening a window, please mark the respective name in this list.

3. Group windows

Analogical to the program manager, *DEMAS* administers group windows, which can be placed just as you like on the desk top of *DEMAS*. Generally groups serve the administration of sensors and/or sub-groups, which belong logically together. Normally these are, for example, geographical regions. Due to this, group windows can be backgrounded with any bit map graphics.

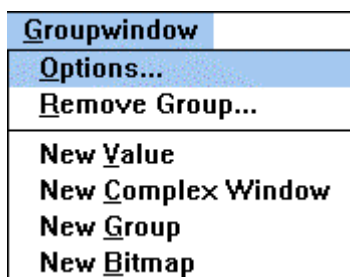
In order to install a new group, the menu command new group window out of the menu window has to be called. Then the new group appears and a dialog window, in which you can choose the back-ground graphic and the group title. The input of the back-ground picture is optional, the input of the title is obligatory and must be unique (please see 3.1.1. Group Options).

A group can consist of as much sub-ordinated windows, as required. These are value windows, jump windows and bit-map windows. In order to place the windows to the group, please choose one of the menu commands out of the local menu of the group or out of the menu group windows. This changes the mouse-indicator and by pressing the left mouse-button a new element will be produced. Now the new window can be arranged by means of the appearing dialog box. This procedure can be stopped with *ESC*.

Note: The classification of the windows within the groups is just the way you want and has no influence to the internal hierarchy. This means that each value window can be placed to a free selected position within any group. The display of the measuring values within groups is completely independant from the measuring system hierarchy.

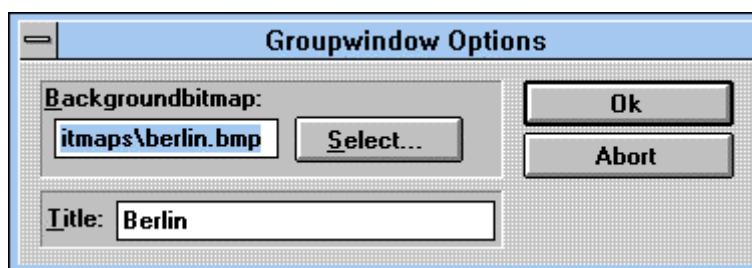
3.1. The menu "Group Window"

The menu Group Window can only be seen, if a group is activated. This menu corresponds to the local menu of the group windows and can also be reached by pressing the right mouse-button above a group window:



3.1.1. The menu command "Options"

In order to change an already installed group, the group has to be activated and the menu command Options has to be called out of the menu group window or the local menu (press right mouse-button within the group window). Following dialog box will be shown:



As background picture any bit map data can be used, which ends with the extension *.BMP or *.DIB. If the name of the graphic is not known, *Select* opens the index window, by means of which the graphic can be selected. These can either be scanned or produced with *Paintbrush* or other bit-map-orientated drawing programs. The window size adjusts automatically to the size of the back-ground picture. If the size of the back-ground picture is bigger than the window size, picture bars are displayed.

The window title must be clear and references the respective group.

3.1.2. The menu command "Remove Group"

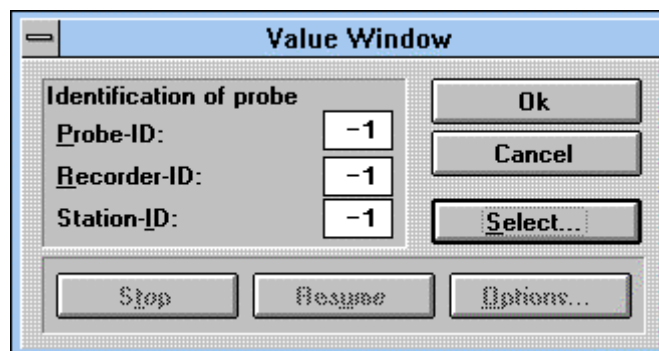
In order to remove an existing group, choose the command Remove Group out of the local group menu or out of the menu Group Window.

3.1.3. New sub-ordinated windows

In order to place sub-ordinated windows in groups, choose the group which you want to extend, choose one of the last menu items out of the menu group window or out of the local group menu - a changed cursor appears - and click with the mouse to the position (left upper corner) to which you want to place the window. Then a dialog box appears for arranging the new window.

a) "New Value"

Value windows serve for displaying of actual measuring values of any available sensor within the system. A classification of the sensor to the window will be realized with the identification number. But generally the comfortable way of choosing the input out of the measuring system bar will be used.



The bottom part of the dialog window **VALUE WINDOW** with the switch buttons stop, resume and options..., correspond to those within the dialog **SETUP MEASUREMENT SYSTEM** and should only be used from trained staff.

The writing mode resp. the background color of all measuring windows can be changed with the menu item data/preferences.

b) "New Complex Window"

Complex value windows are sub-ordinated windows, assigned to the central computer (with all sub-ordinated recording systems and sensors), a recording system (logger with all sensors) or to a concrete sensor. As complex value windows moving pictures or sensor lists within a window are implemented. Therefore, after placing the window, the dialog box **COMPLEX VALUE WINDOW** appears, with which the type of the window can be chosen. By confirmation, analogical to a) new measuring value, also the measuring system input must be chosen (see above).

c) "New Bitmap"

Bitmap-windows are small pictures, which serve generally as background for measuring windows. Any bitmap-graphics can be inserted. Alternatively, the background can be colored within the bitmap-window.

If a bitmap-graphic has been chosen, the size of the window will be adjusted to the size of the graphic. Further color-options will be ignored.

If no graphic has been chosen, or the graphic is not valid, three different color options can be selected:

- *clear* shows the complete bitmap-window with the chosen (select) color. The background will be cleared.
- *painted* overlays the background with the selected color. With different grey-shades, the color of the background picture can be influenced.
- *transparent* presents the background

For placing a text within this window (which will be placed centered) please insert the text into the *title*.

d) "New Group" (jump window)

Jump windows are bitmap-windows with a reference to any group window, as extended option. With double click to a jump window or if the menu item openout of the local menu is called, the referenced group window will be displayed.

3.2. Application of the sub-ordinated windows

Any sub-ordinated window has different functions that are explained below.

3.2.1. The local menus of the sub-ordinated windows

For each group element (sub-ordinated window) a local menu exists. This will be called, by moving the mouse cursor above the respective group element and pressing the right mouse-button. Depending on the type of the group element, different menus will be displayed, whereas some of the menu items are uniform.

a) Open

This menu item opens the sub-ordinated window:

- if the sub-ordinated window is a measuring window, a dialog box will be presented, which gives further information about the belonging sensor (see 2.5.1. New Value Window).
- if the sub-ordinated window is a jump window, the assigned group will also be displayed (this menu item corresponds to a double click, see below).

b) "Actualize"

This menu command is only available for value windows or complex value windows and actualizes the displayed measuring value(s) within this window. Depending on the type of the belonging measuring element, the started actions can be different. In case of on-line-recording systems, for example, automatically a new measuring value will be determined.

c) "Chart"

The menu command Chart is active for value windows or complex value windows only and opens the chart graphic for the respective measuring system element (see 2.5.2. The command Chart).

d) "List"

The menu command List is active for value windows or complex value windows only and opens the list of the measuring line for the respective measuring system element (see 2.5.3. The command List).

e) "Extended Display"

The menu command Extended Display is active for value windows only and opens the extended presentation with time of the measuring value (this menu command corresponds to a double click; see below).

f) "Options"

The menu command Options opens a dialog box with which the appearance for the window can be changed (see 3.1.3. New sub-ordinated window).

g) "Extended Display Options"

The menu command Extended Display Options is used for changing the appearance of the extended presentation. This menu command is active for value windows and only in case the respective sensor supports it. The appearing dialog box depends on the connected sensor.

h) "Move"

The menu command Move can be used for new positioning of a sub-ordinated window. After activation of this command, the mouse cursor will be placed to the middle of the window. Now, it can be moved with the mouse. By pressing the left mouse-button the position will be stored. For interruption of this procedure, press ESC.

Note: In case the option *Save settings* when exiting of the dialog box **PREFERENCES** has been de-activated, the new position will not be saved by finishing *DEMAS*. The window will be displayed at the old position in case of new start.

i) "Change Size"

The menu command Change Size can be used for resizing of a sub-ordinated window. After activation of this command, the mouse cursor will be placed to right bottom corner of the window. Now, it can be sized with the mouse. By pressing the left mouse-button the size will be stored. For interruption of this procedure, press ESC.

Note: In case the option *Save settings* when exiting of the dialog box **PREFERENCES** has been de-activated, the new size will not be saved by finishing *DEMAS*. The window will be displayed at the old position in case of new start.

j) Remove

The menu command remove removes the sub-ordinated window of a group.

3.2.2. The mouse actions of sub-ordinated windows

Beyond the menu command, each sub-ordinated window has further functions, which can be executed with the mouse.

a) Left mouse-button - move

Press the left mouse-button and the SHIFT-key simultaneously and keep it pressed. Now, you can move the window to the required position. By releasing the mouse-button the actual position will be saved.

Note: This option is activated only, in case click and move within the dialog box Preferences is activated.

Note: In case the option Save settings when exiting of the dialog box Preferences has been de-activated, the new position will not be saved by finishing *DEMAS*. The window will be displayed at the old position in case of new start.

b) Right mouse-button - local menu

The right mouse-button opens the local menu of the sub-ordinated window. See also item 3.2.1. The local menus of sub-ordinated windows.

c) Double click with the left mouse-button - open

The double click of the left mouse-button can start different actions:

- in case the window is a jump window, it can open the referenced group.
- in case the window is a value window, each double click switches from extended presentation to standard presentation and vice-versa.
- in case the window is a complex value window, a double click can start different actions, depending on the type of the window.

Annex A : Glossary

Within this chapter all terms will be explained, which are used within this documentation and eventually don't correspond to the general use.

Bitmap-window

Bitmap-windows are graphical objects, which can be placed within a group window. With bitmap generally a point-scheme-graphic is meant.

Recording system

Recording systems are all intelligent or non-intelligent dataloggers, or also simple A/D converters, which record measuring data of sensors and transmit them to a PC. The transmission can be effected on-line or off-line. On-line transmissions are for example the communication via the PC-bus or by means of telephone or satellite transmission. The transmission generally will be effected automatically.

Off-line transmissions must be activated - in any case - from the user. It can be effected with disks or memory cards or similar.

The logical recording systems within DEMAS only serve for representation and connection between software and hardware.

Group

Groups are windows within the user surface of DEMAS, on which different graphical objects can be placed. Generally these groups are used for arranging logical and geographical belonging measuring values/sensors. The classification to the groups is completely independent from the measuring system hierarchy.

Local menu

Local menus are context-specifically popup-menus, which generally can be activated with the right mouse-button.

Measuring window

A measuring window represents one or several measuring parameters and represents the actual measuring value(s). They are windows which can be placed to any groups.

Jump window

A jump window is a window, sub-ordinated to a group and represents another group. Jump windows, for example, can be graphics. By double click with the left mouse-button to this jump window, the represented group will be opened.

Central computer

The central computer is the computer, on which DEMAS can be stored. The term central computer will also be used in connection with the measuring system index.